

DX2 Series Insert Manual



For complete installation instructions, reference the Tube Heater General Manual that accompanies this insert manual.

RE-VERBER-RAY

The DX2 Series Infra-Red Tube Heater is a positive pressure, single-stage radiant heater system. This insert manual is a supplement to the Tube Heater General Manual and provides specific information related to the DX2 Series model. All persons involved with the installation, operation and maintenance of the heater system must read and understand the information in this insert manual and the accompanying Tube Heater General Manual.

⚠ WARNING



Improper installation, adjustment, alteration, service or maintenance can cause property damage, injury or death. Read the installation, operation and maintenance instructions thoroughly before installing or servicing this equipment.

This heater must be installed and serviced by trained gas installation and service personnel only. Failure to comply could result in personal injury, asphyxiation, death, fire or property damage.



In locations used for the storage of combustible materials, signs must be posted to specify the maximum permissible stacking height to maintain the required clearances from the heater to the combustibles. Signs must either be posted adjacent to the heater thermostats or in the absence of such thermostats, in a conspicuous location.



Not for residential use! Do not use this heater in the home, sleeping quarters, attached garages, etc. Installation of a commercial tube heater system in residential indoor spaces may result in property damage, serious injury, asphyxiation or death.

For Your Safety

If you smell gas:

- Do not try to light any appliance.
- Do not touch any electrical switch.
- Do not use any phone in your building.
- Immediately call your gas supplier from a neighbor's phone.
- Follow the gas supplier's instructions.
- If you cannot reach your gas supplier, call the fire department.

Keep these instructions for future reference.

Contents

1.0 Safety	3
Safety Labels and Locations	3
Clearance to Combustibles	4
2.0 Installation	6
Gas Requirements	6
Electrical Requirements	6
Wiring	7
Specifications	10
Tube Installation Sequence	11
3.0 Operation	12
Sequence of Operation	12
Thermostat	12
Operational Indicator Lights	13
4.0 Troubleshooting Guide	14
5.0 Parts	18
Components	18
Parts List	18
Kit Contents Check List	20
Approvals	20
Limited Warranty	20

NOTE: See page 10 for a list of available models and specifications.

1.0 Safety



Read and understand all safety information and warnings in this insert manual and the Tube Heater General Manual before installation, operation and maintenance of the radiant tube heater system.

Safety Labels and Their Locations

Product safety signs or labels should be replaced by the product user when they no longer are legible. Contact either your local distributor or the product manufacturer for obtaining replacement signs or labels.

Back Panel

F/N: LLAC
Air Metering Orifice

Top Panel

F/N: LLTB018 (Natural Gas)
F/N: LLTB019 (LP Gas)

Bottom Panel

F/N: LLLOG01

F/N: LLCL001 Clearance to Combustibles Label.

RE-VERBER-RAY INFRA-RED RADIANT TUBE HEATER FOR INDOOR INSTALLATION ONLY

MODEL NO. INPUT BTU/H FOR USE WITH

DX2 - 40 - 125N	125,000	NAT GAS
-----------------	---------	---------

DESIGN COMPLIES WITH: ANSI Z83.20-2003 GAS FIRED LOW INTENSITY INFRA-RED HTR

VOLTS AC 60Hz 120V

AMPS - Starting 4.8

AMPS - Running 1.1

Heater Type: C1

W.C.P. (Working Copy Pressure)

Min. Inlet Pressure	3.5in.	W.C.P.
Max. Inlet Pressure	14.0in.	W.C.P.
Min. Inlet Pressure for Purpose of Input Adjustment	5.0in.	W.C.P.

Min. Mounting Angle 0 DEGREES

Max. Mounting Angle 45 DEGREES

Combustion Chamber 4" BC Aluminumized

Serial No. 0603DETR12345 0001

Rating Plate

WARNING Improper installation, adjustment, alteration, service or maintenance can cause property damage, injury or death.

DANGER FIRE HAZARD. Always maintain sufficient clearance to combustibles. In locations used for the storage of combustible materials, signs must be posted. Consult manual for additional guidelines.

CAUTION Follow all State and local codes when installing this equipment. In the absence of such codes, consult the National Fuel Gas Code (NFPA 54).

Clearance to Combustibles (in inches)

Clearance to Combustibles (in inches)	Front	Side	Top	Below
120000 BTU/H	18"	18"	18"	18"
150000 BTU/H	24"	24"	24"	24"
200000 BTU/H	30"	30"	30"	30"
250000 BTU/H	36"	36"	36"	36"
300000 BTU/H	42"	42"	42"	42"
350000 BTU/H	48"	48"	48"	48"
400000 BTU/H	54"	54"	54"	54"
450000 BTU/H	60"	60"	60"	60"
500000 BTU/H	66"	66"	66"	66"
550000 BTU/H	72"	72"	72"	72"
600000 BTU/H	78"	78"	78"	78"
650000 BTU/H	84"	84"	84"	84"
700000 BTU/H	90"	90"	90"	90"
750000 BTU/H	96"	96"	96"	96"
800000 BTU/H	102"	102"	102"	102"
850000 BTU/H	108"	108"	108"	108"
900000 BTU/H	114"	114"	114"	114"
950000 BTU/H	120"	120"	120"	120"
1000000 BTU/H	126"	126"	126"	126"
1050000 BTU/H	132"	132"	132"	132"
1100000 BTU/H	138"	138"	138"	138"
1150000 BTU/H	144"	144"	144"	144"
1200000 BTU/H	150"	150"	150"	150"

SAFETY INSTRUCTIONS

Lighting Procedures

- Verify that service is not required.
- Open burn-off gas supply to the heater.
- Close burn-off gas supply, flame arrest, if the heater fails to start, turn off gas, open electrical control and wait 5 minutes before repeating above steps.

Shutdown Procedures

- Open burn-off electrical control.
- Close burn-off gas supply to the heater.

DX2-40-125N Serial No. 0804XXXXXXXX 0001

Production Code: DX2-125 Stock/None

Version: 5.08 Add-On/NA

Data on this label is for the model shown on this label. If your heater has been converted, this information is not accurate. Please contact the factory for assistance.

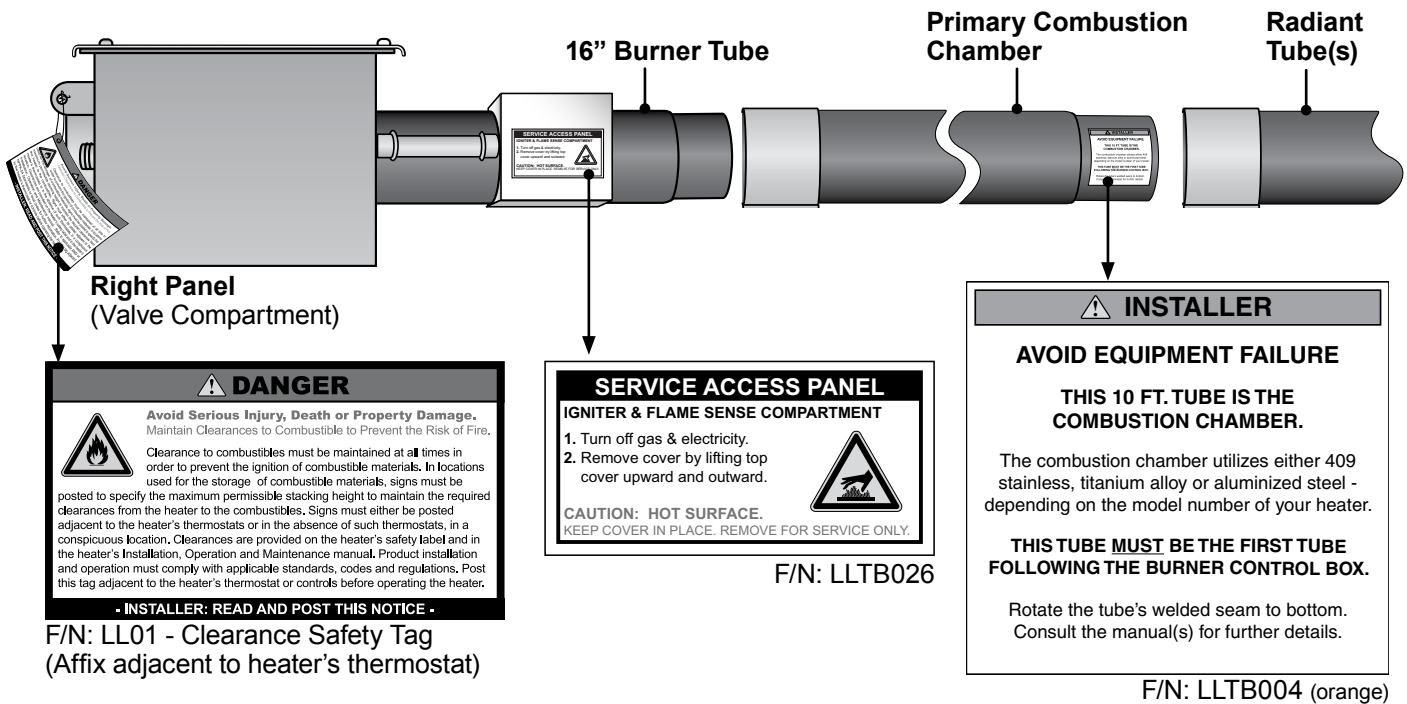
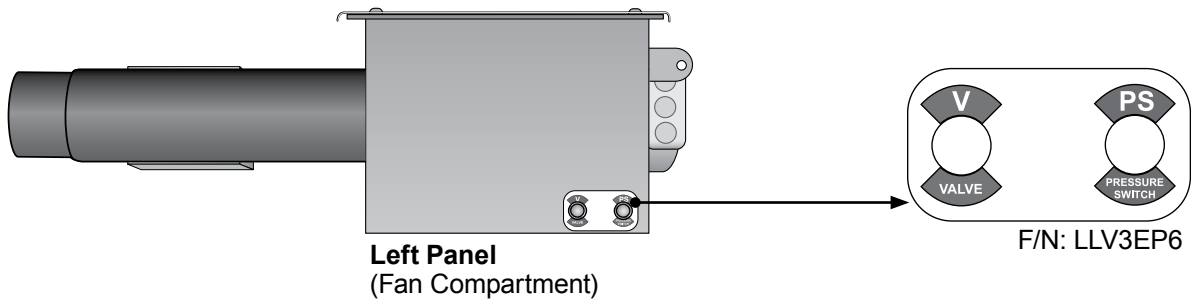
BURNER COMPONENTS: (Specify TP-F's)

Part Name	Part No.	Quantity	Location	Notes
Gas Valve	VH40S-1324	240	On Circuit Board	N/A
Flame Rod	SMR9-1025-117	251A	None	N/A
Max. Gas Pressure	3 PCS Harness	352A	40 VA	N/A
Gas Solenoid	None	N/A	Fasco Ig	55A
Min. Gas Pressure	None	N/A	50N - 120V	55B
A.C. Solenoid	None	N/A	Alt. Gas Usage	When Specified
N.C. V.A. Solenoid	None	N/A	Ballast	None
On/Off Switch	ISPP0100-1-954E	1	None	N/A
Off V.A. Solenoid	None	N/A	24 Volt Ig	3 T plug
Gas Solenoid	None	N/A	2 x 4 Box	66
Gas Solenoid	None	N/A	78" P.C. Flare	83
Gas Solenoid	None	N/A	None	None
Gas Solenoid	None	N/A	None	None

HEATER TYPE: C1

Internal Use Only: Electric: LLV7008 Special 1: 17 Tag: None Special 2: 1.716"

For parts replacement information, contact factory at 586-756-0950 or visit www.drp-co.com/parts.



Clearance to Combustibles

⚠ WARNING



Placement of explosive objects, flammable objects, liquids and vapors close to the heater may result in explosion, fire, property damage, serious injury or death. Do not store or use explosive objects, liquids or vapor in the vicinity of the heater.

Clearance to combustibles is defined as the minimum distance that must exist between the tube surface, or reflector, and any combustible items (see Figure 1.1). It also pertains to the distance that must be maintained from moving objects around the tube heater.

When installing the tube heater system, clearances to combustibles for your series tube heater and configuration must be maintained. Refer to Chart 1.1 on the following page to determine the required distances for your model.

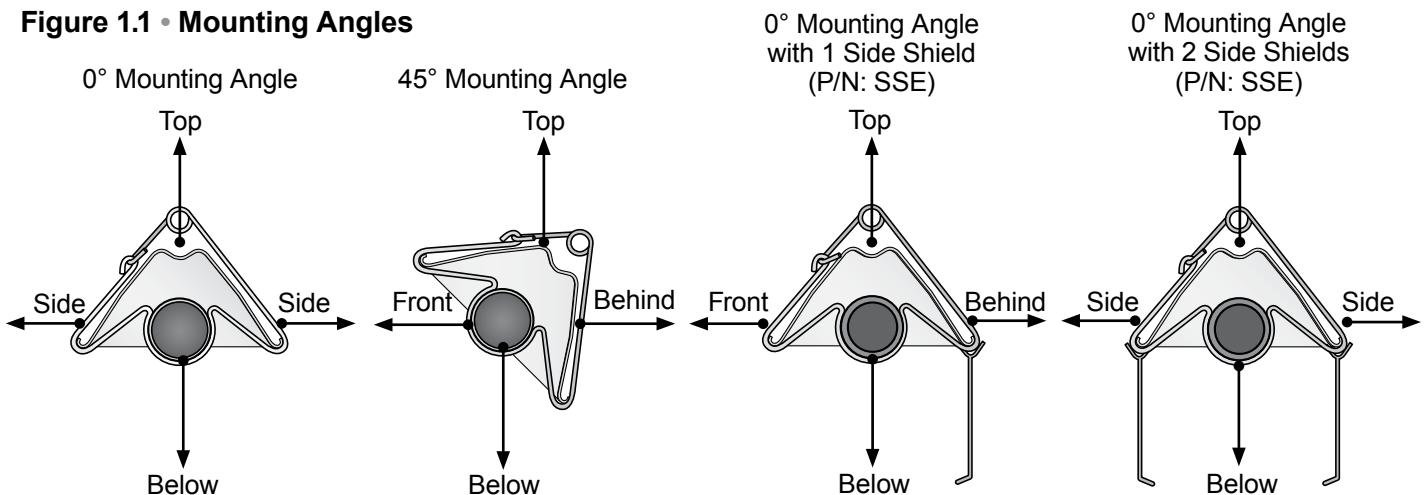
The stated clearance to combustibles represents a surface temperature of 90°F (32°C) above room temperature. Building materials with a low heat tolerance (such as plastics, vinyl siding, canvas, tri-ply, etc.) may be subject to degradation at lower temperatures. It is the installer's responsibility to assure that adjacent materials are protected from degradation.

Chart 1.1 • Clearance to Combustibles in Inches (see Figure 1.1 for Mounting Angles)

Model Number	Mounting Angle*	Side		Top	Below	
		Front	Behind			
DX2 (20, 30, 40) - 50, 60 [N, P]	0°	9	9	6	47	
	45°	39	8	10	47	
	with 1 side shield	0°	29	8	6	47
	with 2 side shields	0°	9	9	6	47
	20 ft. from burner	0°	7	7	6	30
DX2 (20, 30, 40) - 75 [N, P]	0°	9	9	6	60	
	45°	39	8	10	60	
	with 1 side shield	0°	29	8	6	60
	with 2 side shields	0°	9	9	6	60
	20 ft. from burner	0°	7	7	6	30
DX2 (20, 30, 40, 50) - (80, 96, 100) [N, P]	0°	14	14	6	66	
	45°	39	8	10	66	
	with 1 side shield	0°	29	8	6	66
	with 2 side shields	0°	16	16	6	66
	20 ft. from burner	0°	7	7	6	30
DX2 (30, 40, 50, 60) - 125 [N, P]	0°	20	20	6	76	
	45°	58	8	10	76	
	with 1 side shield	0°	42	8	6	76
	with 2 side shields	0°	20	20	6	76
	20 ft. from burner	0°	7	7	6	30
DX2 (40, 50, 60) - 150 [N, P]	0°	24	24	6	81	
	45°	58	8	10	81	
	with 1 side shield	0°	42	8	6	81
	with 2 side shields	0°	23	23	6	81
	20 ft. from burner	0°	11	11	6	44
DX2 (40, 50, 60, 70) - 175 [N, P]	0°	34	34	6	92	
	45°	63	8	10	92	
	with 1 side shield	0°	50	8	6	92
	with 2 side shields	0°	30	30	6	92
	20 ft. from burner	0°	11	11	6	44
DX2 (50, 60, 70, 80) - 200 [N, P]	0°	41	41	6	94	
	45°	63	8	10	94	
	with 1 side shield	0°	54	8	6	94
	with 2 side shields	0°	30	30	6	94
	20 ft. from burner	0°	11	11	6	44

* Heaters mounted on an angle between 0° to 45° must maintain clearances posted for 0° or 45°; whichever is greater.

Figure 1.1 • Mounting Angles



2.0 Installation

⚠ WARNING



Improper installation, adjustment, alteration, service or maintenance can cause property damage, serious injury or death. Read and understand, the installation, operating and maintenance instructions thoroughly before installing or servicing this equipment. Only trained, qualified gas installation and service personnel may install or service this equipment.

Not for residential use! Do not use this heater in the home, sleeping quarters, attached garages, etc. Installation of a commercial tube heater system in residential indoor spaces may result in property damage, serious injury or death.

Instructions for the following are detailed in the Tube Heater General Manual:

- Design considerations
- Hanger suspension and placement
- Tube layout and assembly
- Burner control box suspension
- Reflectors (and accessories)
- Venting and combustion air intake
- Gas requirements
- Baffle assembly

Note: Electronic versions of all manuals are available at www.detroitradiant.com

Gas Requirements

Type of Gas	Required Manifold Pressure	Minimum Inlet Pressure	Maximum Inlet Pressure
Natural	3.5 Inches W.C.	5.0 Inches W.C.	14.0 Inches W.C.
Liquefied Petroleum	10.0 Inches W.C.	11.0 Inches W.C.	14.0 Inches W.C.



IMPORTANT: Consult the Tube Heater General Manual for gas connection requirements.

Electrical Requirements

NOTICE

The DX2 Series comes standard requiring a 120VAC connection to the thermostat. An optional 24VAC internal relay (24VAO) may be factory installed if the heater is to be controlled via a 24VAC thermostat. A 40VA transformer is necessary when using the 24VAO option.

NOTE: A relay transformer may be used in lieu of the factory installed 24VAO option.

- 120VAC - 60 Hz GRD, 3-wire.
- 120VAC thermostat connection.
- Starting current 4.8 amps
- Running current 1.1 amps

Wiring

⚠ WARNING

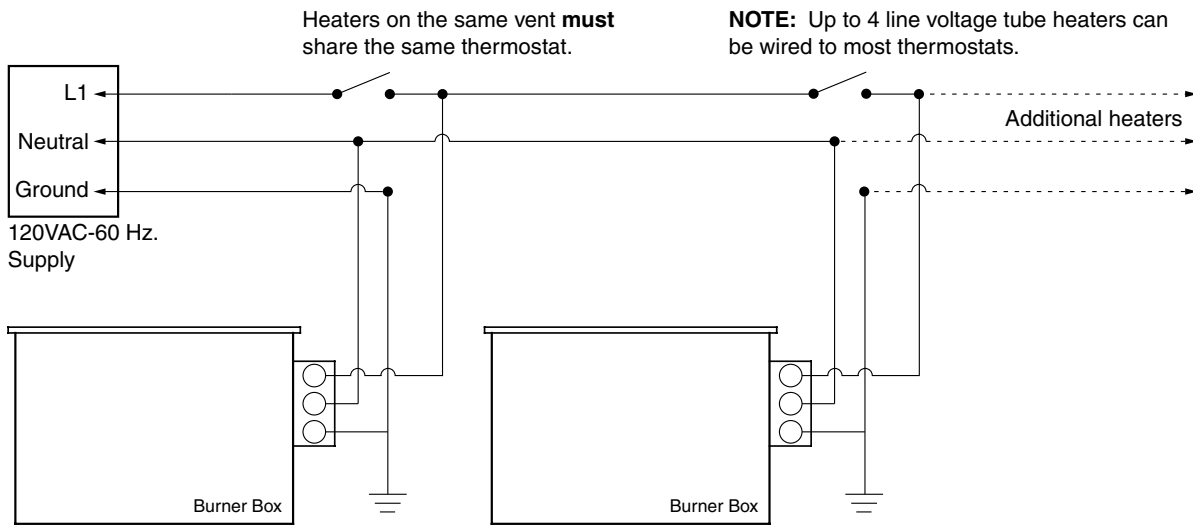


Electric Shock

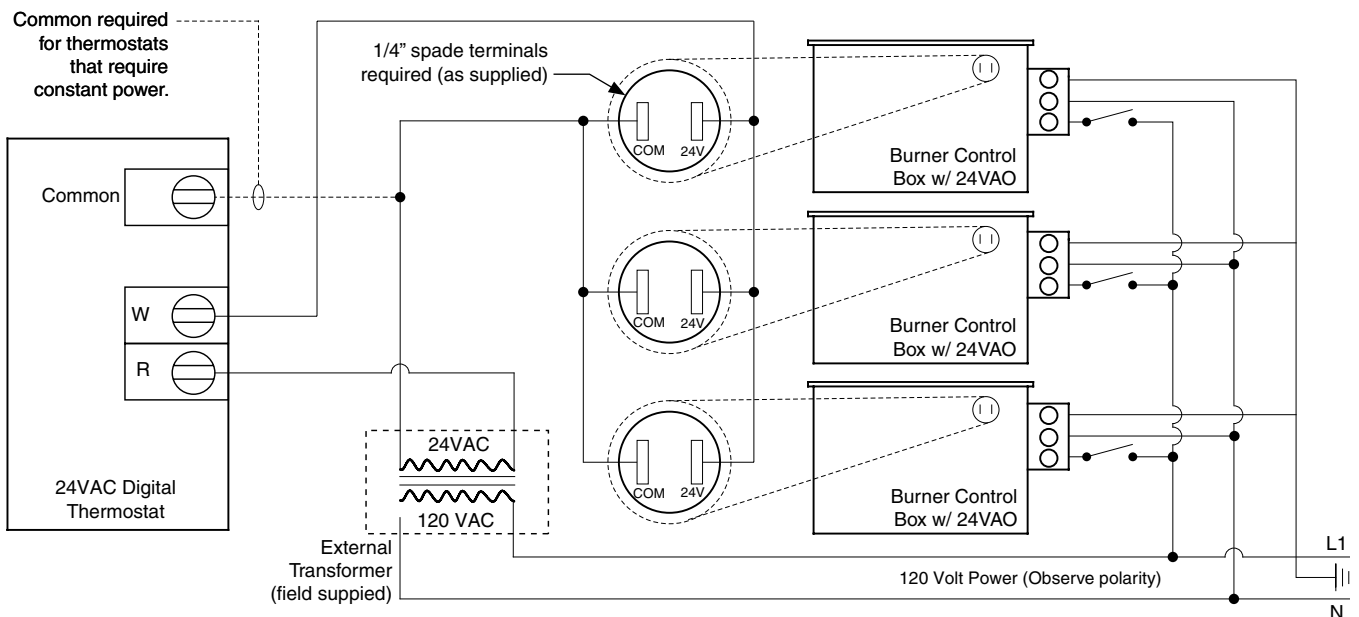
Field wiring to the tube heater must be connected and grounded in accordance with national, state, provincial, local codes and to the guidelines in the Tube Heater General Manual and Series Insert Manual. In the United States refer to the most current revisions to the ANSI/NFPA 70 Standard and in Canada refer to the most current revisions to the CSA C22.1 Part I Standard.

Figure 2.1 • Field Wiring Diagrams

A. 120VAC Single/Multiple Line Voltage Heater(s)



B. 24VAO (Internal Relay Option)

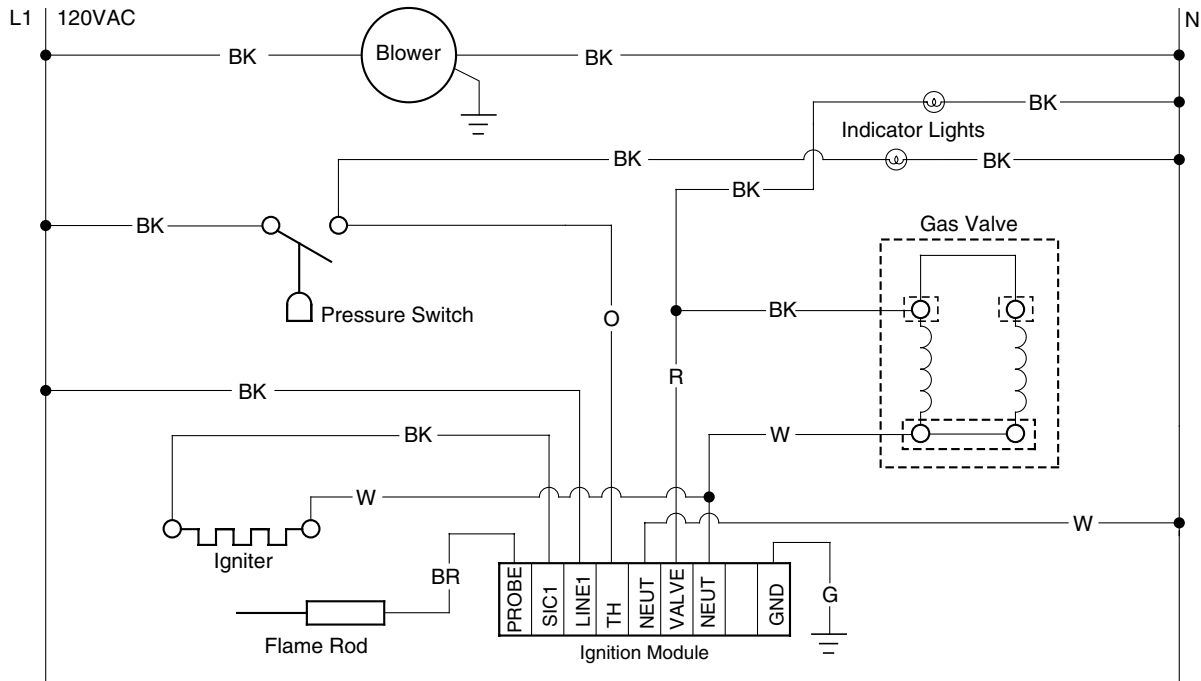


Before field wiring this appliance - Check existing wiring; replace if necessary.

Note: If any of the original wire supplied with the appliance must be replaced, it must be replaced with wiring material having a temperature rating of at least 105° C.

Figure 2.2 • Internal Wiring Diagrams

A. Ladder Diagram - TP-351A



B. Block Diagram - TP-351A

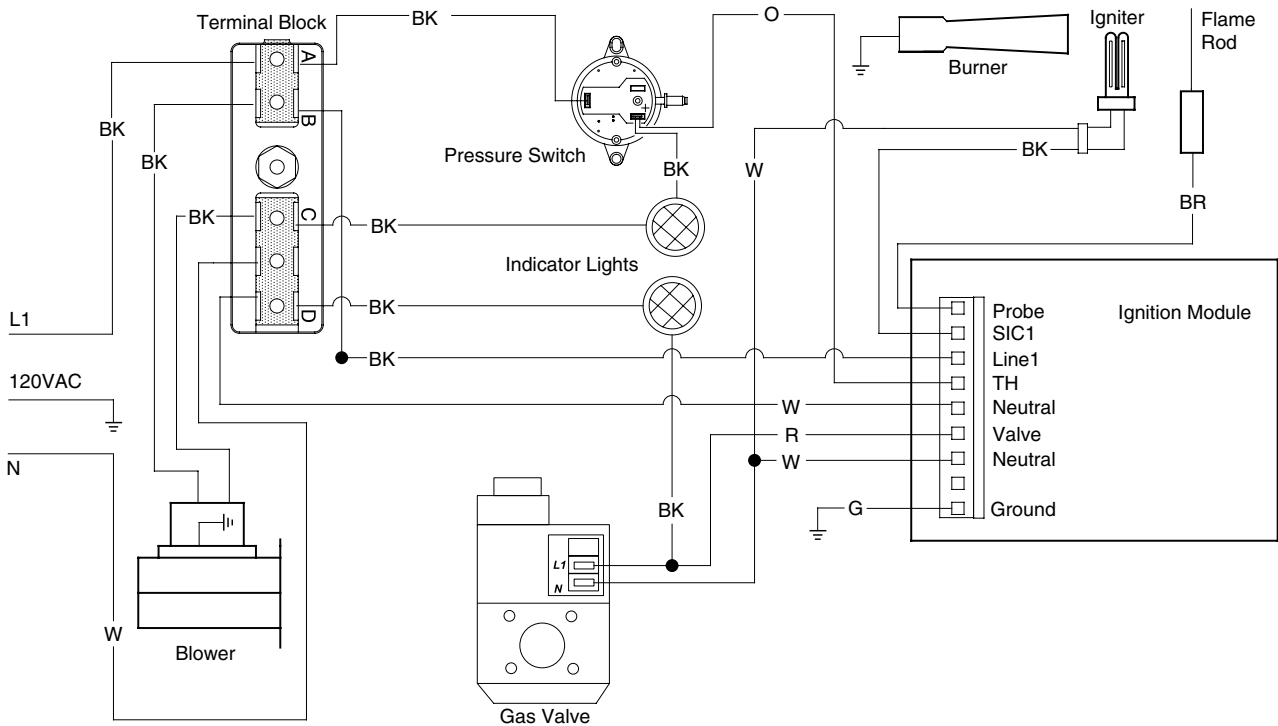
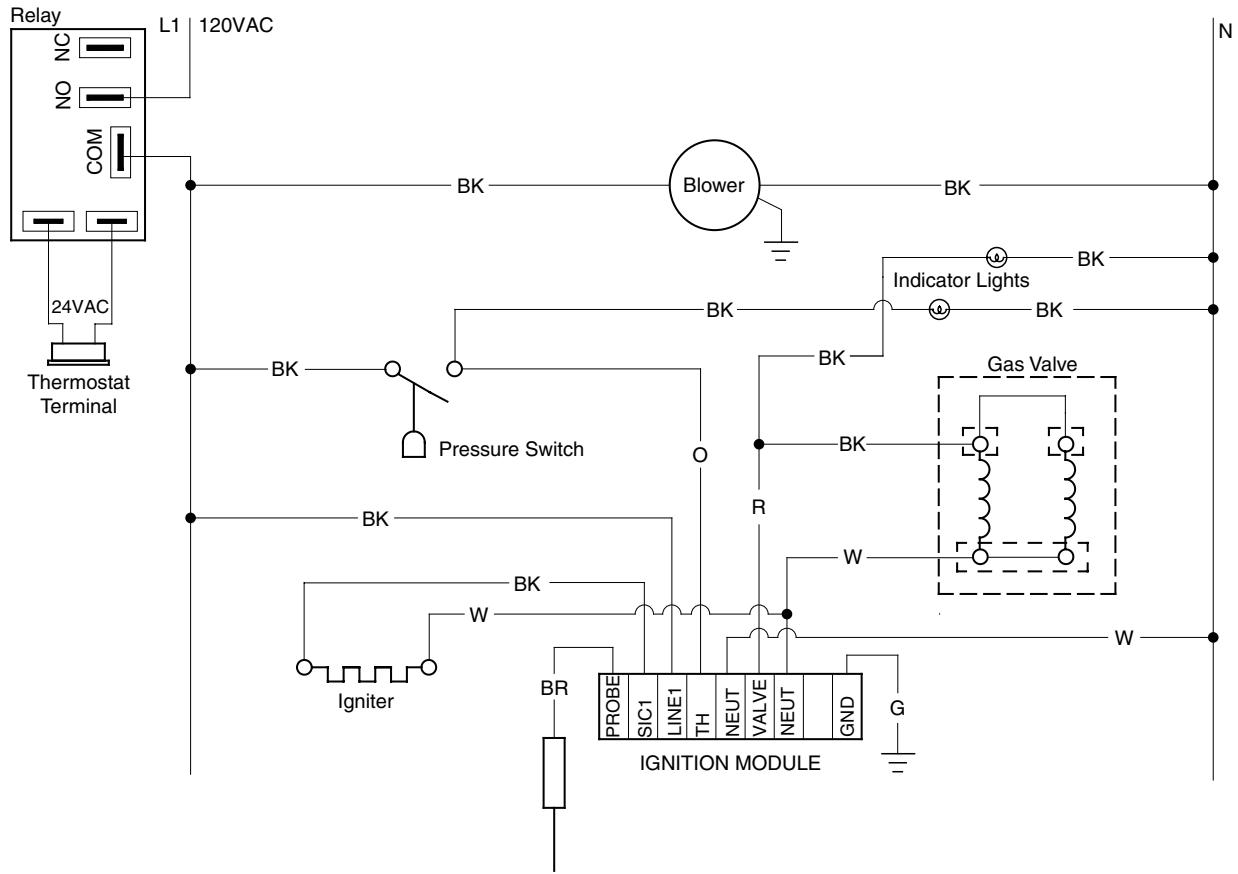
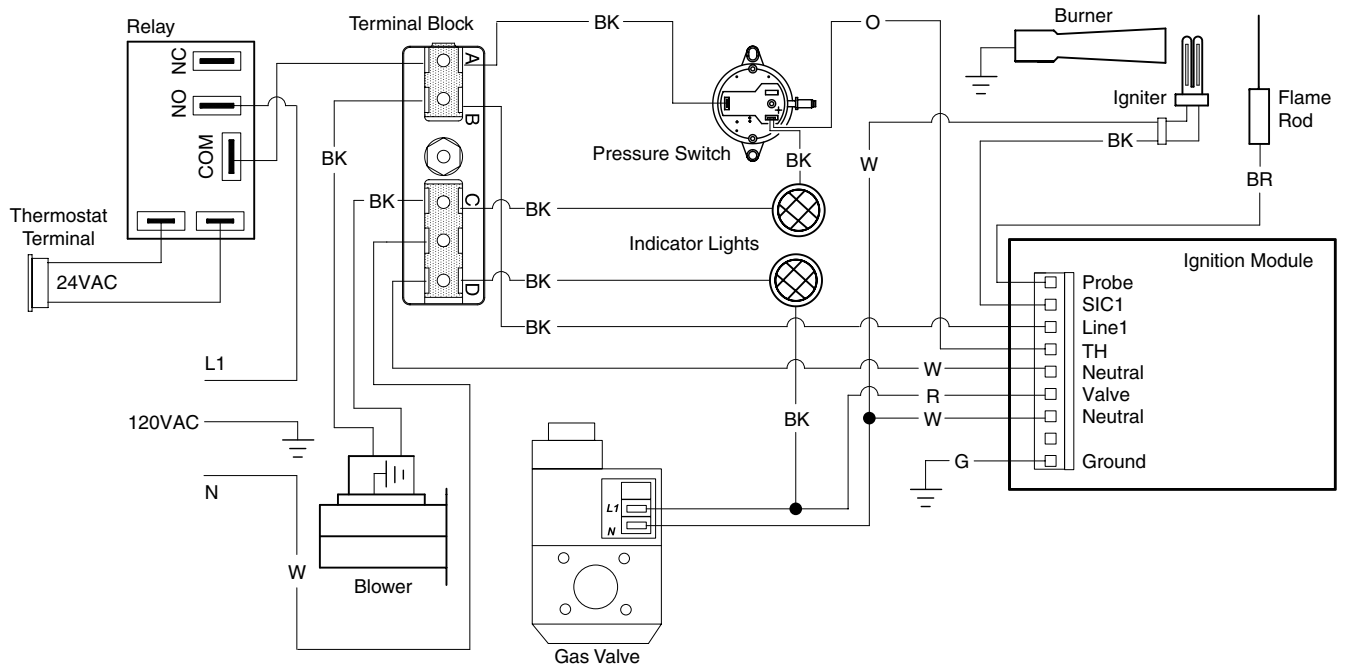


Figure 2.3 • Alternative Wiring Diagrams

A. TP-351A Ladder Diagram - Internal Relay Option (24VAO)



B. TP-351A Block Diagram - Internal Relay Option (24VAO)



Specifications

Chart 2.1 • Specifications

Model Number	Gas Type (Select One)	BTU/H	Straight Length (Dim A)	U-Tube Length (Dim. B)	Weight (lbs.)	Stainless Steel Weight (lbs.)	Recommend Mounting Height	Combustion Chamber (Black Coated)	Radiant Emitter Tube(s) (Black Coated)	Radiant Surface Area (sq. ft.)	36" Baffle Sections
DX2-20-50	N or LP	50,000	21'-8"	13'-0"	120	N/A	9' to 15'	Alum	Alum	20.2	5
DX2-20-60	N or LP	60,000	21'-8"	13'-0"	120	N/A	10' to 15'	Alum	Alum	20.2	5
DX2-20-75	N or LP	75,000	21'-8"	13'-0"	120	145	11' to 18'	Alum	Alum	20.2	5
DX2-20-80	N or LP	80,000	21'-8"	13'-0"	120	145	11' to 18'	Alum	Alum	20.2	5
DX2-20-96	N or LP	96,000	21'-8"	13'-0"	120	145	12' to 20'	Alum	Alum	20.2	5
DX2-30-50	N or LP	50,000	31'-4"	**17'-8"	160	N/A	10' to 15'	Alum	Alum	30.4	4
DX2-30-60	N or LP	65,000	31'-4"	**17'-8"	160	N/A	11' to 18'	Alum	Alum	30.4	4
DX2-30-75	N or LP	75,000	31'-4"	**17'-8"	160	195	12' to 20'	Alum	Alum	30.4	4
DX2-30-80	N or LP	80,000	31'-4"	**17'-8"	160	195	12' to 20'	Alum	Alum	30.4	5
DX2-30-100	N or LP	100,000	31'-4"	**17'-8"	160	195	13' to 23'	Alum	Alum	30.4	5
DX2-30-125	N or LP	125,000	31'-4"	**17'-8"	160	195	14' to 25'	Alum	Alum	30.4	5
DX2-40-50	N or LP	50,000	41'-0"	22'-8"	190	N/A	11' to 18'	Alum	Alum	40.5	2
DX2-40-60	N or LP	60,000	41'-0"	22'-8"	190	N/A	11' to 18'	Alum	Alum	40.5	2
DX2-40-75	N or LP	75,000	41'-0"	22'-8"	190	235	12' to 20'	Alum	Alum	40.5	2
DX2-40-80	N or LP	80,000	41'-0"	22'-8"	190	235	12' to 20'	Alum	Alum	40.5	5
DX2-40-100	N or LP	100,000	41'-0"	22'-8"	190	235	13' to 23'	Alum	Alum	40.5	4
DX2-40-125	N or LP	125,000	41'-0"	22'-8"	190	235	14' to 25'	Alum	Alum	40.5	4
DX2-40-150	N or LP	150,000	41'-0"	22'-8"	190	235	15' to 27'	Titan	Alum	40.5	4
DX2-40-175	N or LP	*175,000	41'-0"	22'-8"	190	N/A	16' to 30'	Titan	Alum	40.5	4
DX2-50-100	N or LP	100,000	50'-8"	**27'-4"	235	290	15' to 27'	Alum	Alum	50.6	2
DX2-50-125	N or LP	125,000	50'-8"	**27'-4"	235	290	15' to 27'	Alum	Alum	50.6	4
DX2-50-150	N or LP	150,000	50'-8"	**27'-4"	235	290	16' to 30'	Titan	Alum	50.6	4
DX2-50-175	N or LP	*175,000	50'-8"	**27'-4"	235	N/A	17' to 35'	Titan	Alum	50.6	2
DX2-50-200	N or LP	*200,000	50'-8"	**27'-4"	235	N/A	18' to 40'	Titan	Alum	50.6	2
DX2-60-125	N or LP	125,000	60'-4"	32'-4"	265	330	16' to 30'	Alum	Alum	60.7	2
DX2-60-150	N or LP	150,000	60'-4"	32'-4"	265	330	17' to 35'	Titan	Alum	60.7	2
DX2-60-175	N or LP	*175,000	60'-4"	32'-4"	265	N/A	17' to 35'	Titan	Alum	60.7	2
DX2-60-200	N or LP	*200,000	60'-4"	32'-4"	265	N/A	18' to 40'	Titan	Alum	60.7	2
DX2-70-175	N or LP	*175,000	70'-0"	**37'-2"	300	N/A	19' to 42'	Titan	Alum	70.9	2
DX2-70-200	N or LP	*200,000	70'-0"	**37'-2"	300	N/A	19' to 42'	Titan	Alum	70.9	2
DX2-80-200	N or LP	*200,000	79'-8"	42'-0"	330	N/A	20' to 45'	Titan	Alum	81.0	2

* Model requires stainless steel tube clamp (P/N: TP-220) to be located at the seam between the primary combustion chamber and the secondary combustion tube downstream of the burner control box.

** Model requires 5EA-SUB accessory package when installing in a U-shaped configuration (P/N: TF1B).

Titan = Coated titanium treated steel.

Alum = Coated aluminized treated steel.

Tube Installation Sequence

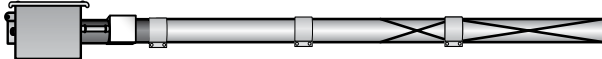
Figure 2.4 • Tube Installation Sequence

Important! The combustion chamber & radiant tube sections must be installed in the following order.

20 Foot



30 Foot

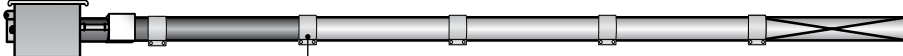


40 Foot



Stainless Steel Clamp on 175 MBH models (P/N: TP-220).

50 Foot



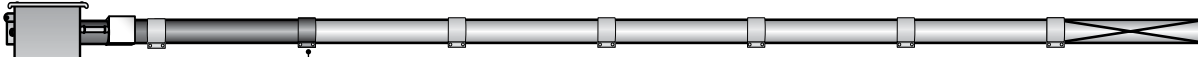
Stainless Steel Clamp on 175 - 200 MBH models (P/N: TP-220).

60 Foot



Stainless Steel Clamp on 175 - 200 MBH models (P/N: TP-220).

70 Foot



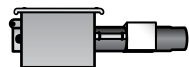
Stainless Steel Clamp Location (P/N: TP-220).

80 Foot



Stainless Steel Clamp Location (P/N: TP-220).

Key



Burner Control Box with
16" Burner Tube



Black Coated Combustion
Chamber Tube*



Black Coated Aluminized Combustion
Chamber/Radiant Emitter Tube



Standard Tube Clamp



Stainless Steel Tube
Clamp (P/N: TP-220)
*175-200 MBH models only - Located
between 1st and 2nd 10 ft. tube sections.*



Baffle Location

*Aluminized steel (50,000 to 125,000 BTU/H models), Titanium stabilized aluminized steel (150,000 to 200,000 models). **NOTE:** Refer to the Tube Heater General Manual, Chart 3.6 (page 23) for secured reflector joints.

3.0 Operation

⚠ WARNING



This heater must be installed and serviced by trained gas installation and service personnel only.

Do not bypass any safety features or the heater's built in safety mechanisms will be compromised.

Note: Reference the Tube Heater General Manual for installation requirements.

Sequence of Operation

Starting Circuit: Upon a call for heat, the fan is energized. Once operational static pressure is achieved, the differential switch will close initiating the ignition sequence. After a 5-second delay, the Glo-bar™ is energized for 45 seconds and the control allows the gas valve to open.

The trial for ignition is 8 seconds. If flame sense is not established within 8.5 seconds, the heater will attempt two (2) additional ignition sequences before proceeding to soft lockout. Soft lockout automatically retries after one (1) hour or the control can be reset by briefly interrupting the power source.

Running Circuit: After ignition, the flame rod monitors burner flame. If sense of flame is lost, the control immediately acts to reignite the gas-air mixture (identical to the starting sequence). If flame sense is not established within 8.5 seconds, the heater will attempt two (2) additional ignition sequences before proceeding to soft lockout. The control can be reset by briefly interrupting the power source.

Thermostat

NOTE: Different thermostats operate according to their particular features. Refer to thermostat specifications for details.

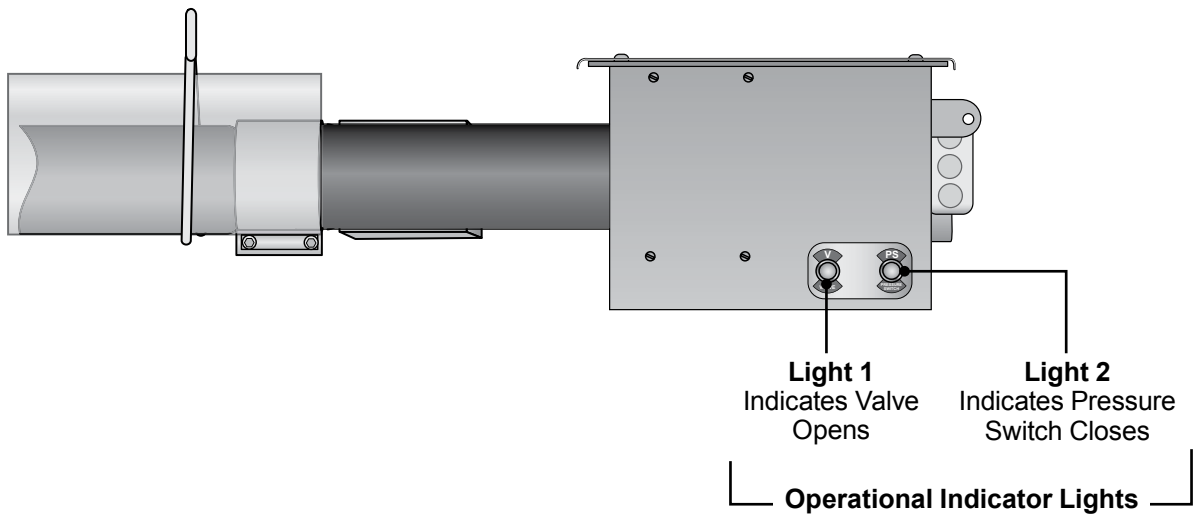
The DX2 Series comes standard requiring a 120VAC connection to the thermostat. An optional 24VAC internal relay (24VAO) may be factory installed if the heater is to be controlled via a 24VAC thermostat. A 40VA transformer is necessary when using the 24VAO option (Figure 2.1B).

NOTE: A relay transformer may be used in lieu of the factory installed 24VAO option.

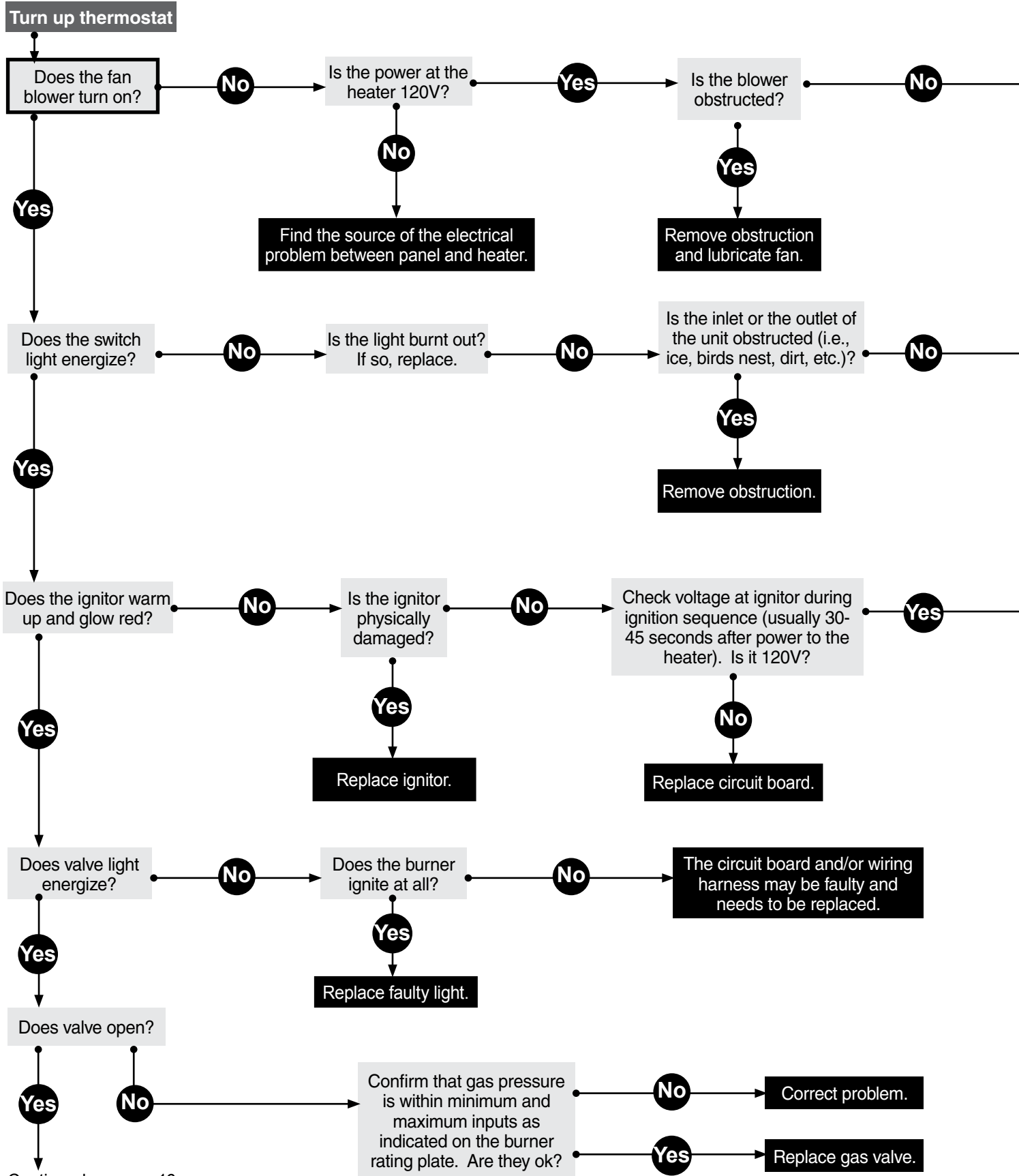
Operational Indicator Lights

The externally located operational indicator lights are provided to assist in troubleshooting of the heater. Refer to the following pages for additional troubleshooting.

Figure 3.1 • Operational Indicator Lights



4.0 Troubleshooting Guide



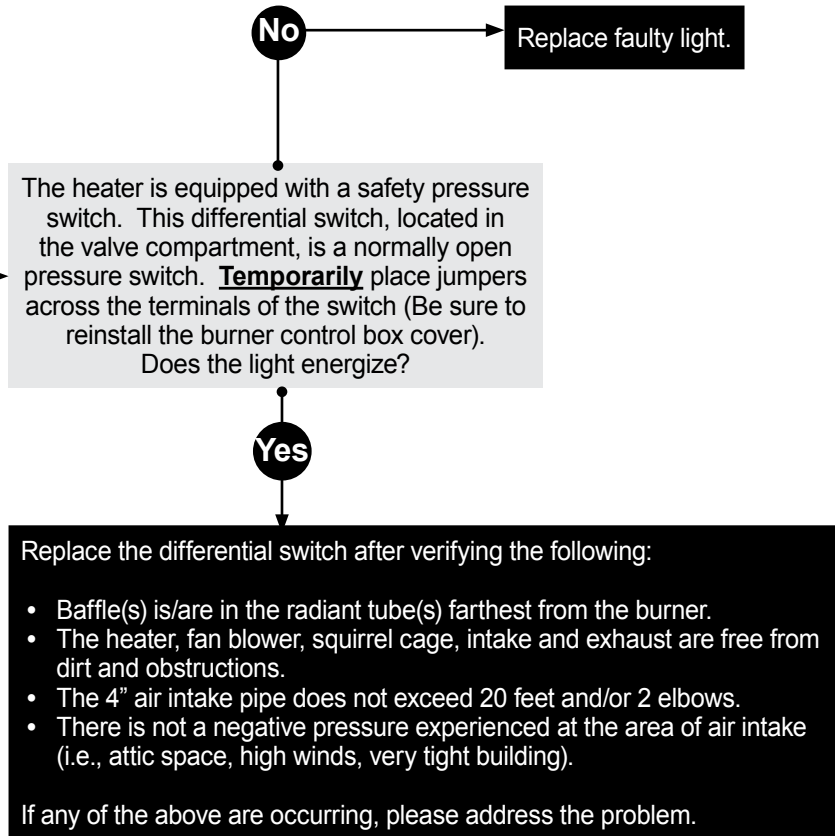
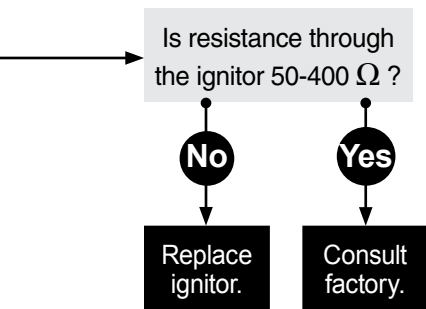
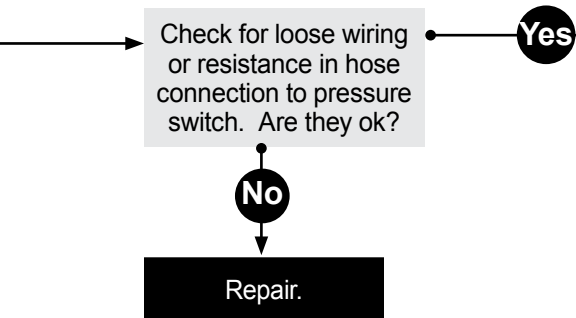
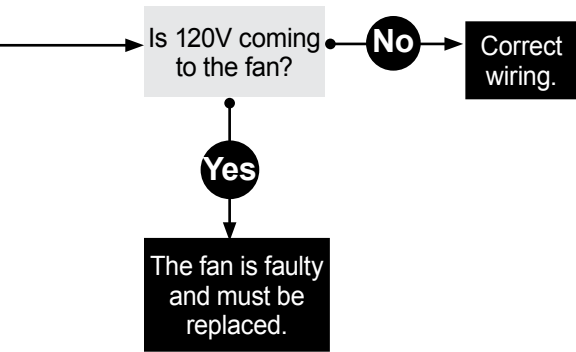
Continued on page 16.

NOTICE

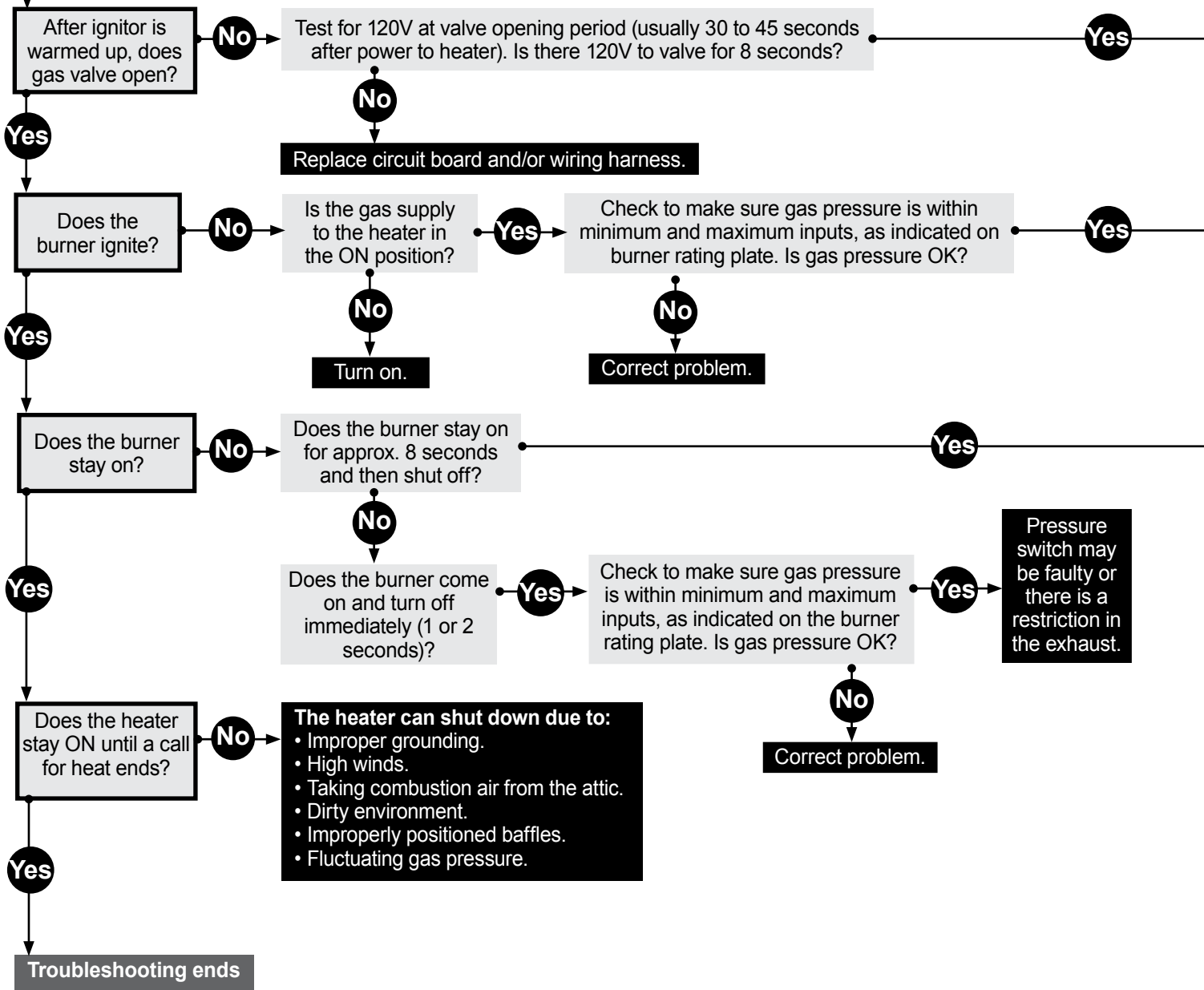
Bypassing any switch is intended for testing purposes only. Do not leave switch bypassed during normal operation or the heater's built-in safety mechanisms will be compromised.

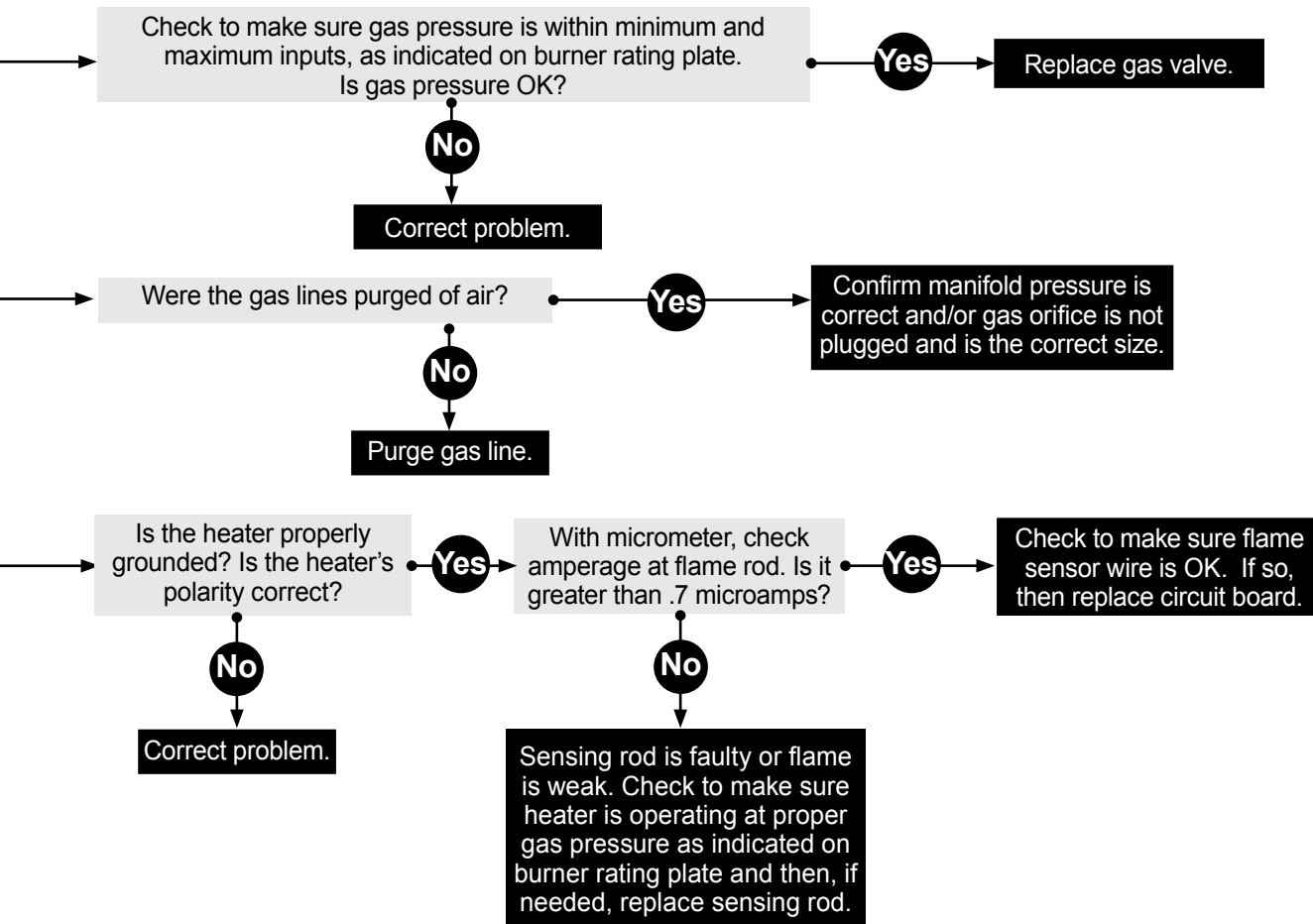
Key

- Start Question
- Process Question
- Corrective Action



Continued from page 14





5.0 Parts

Figure 5.1 • Burner Assembly Components

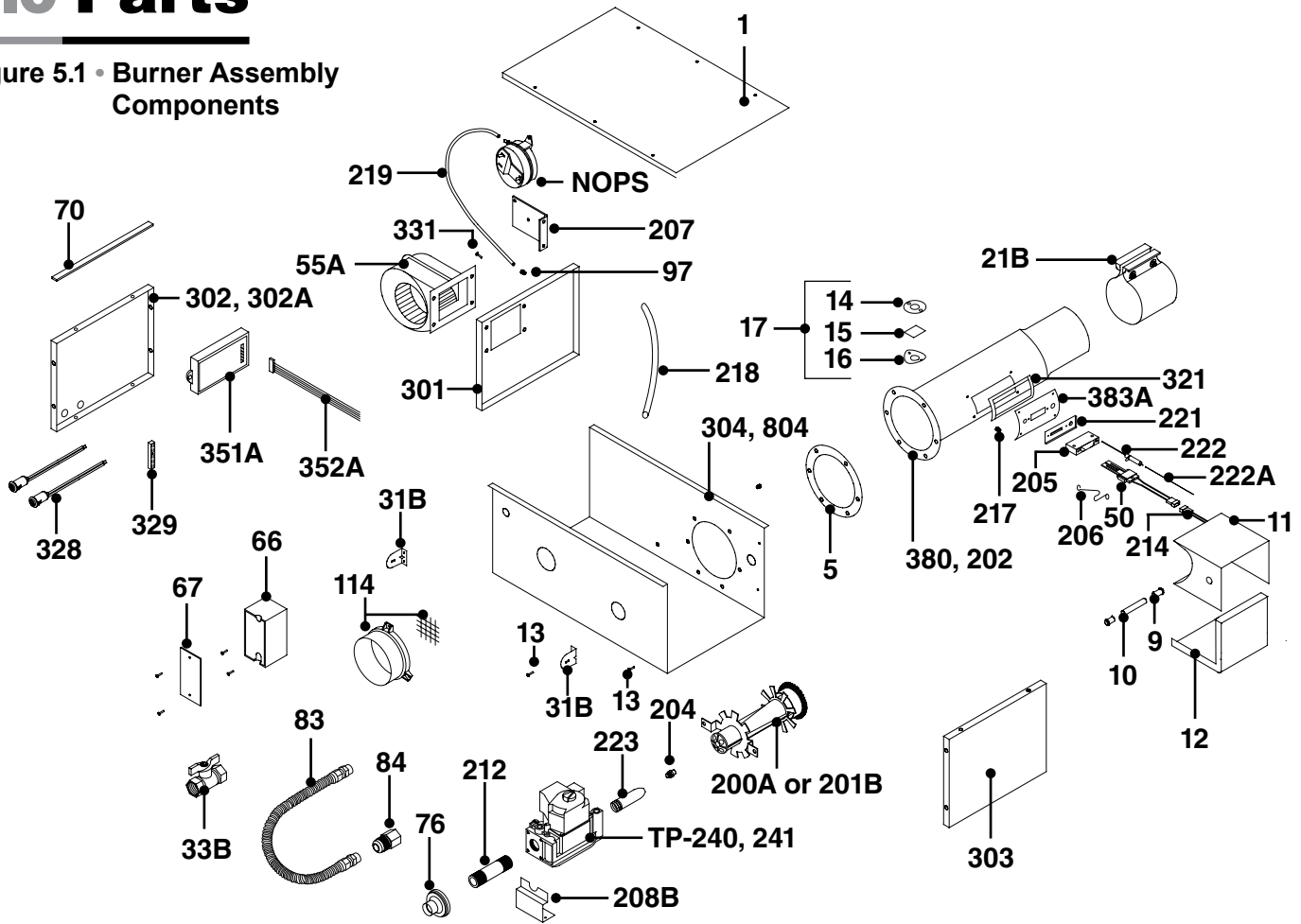
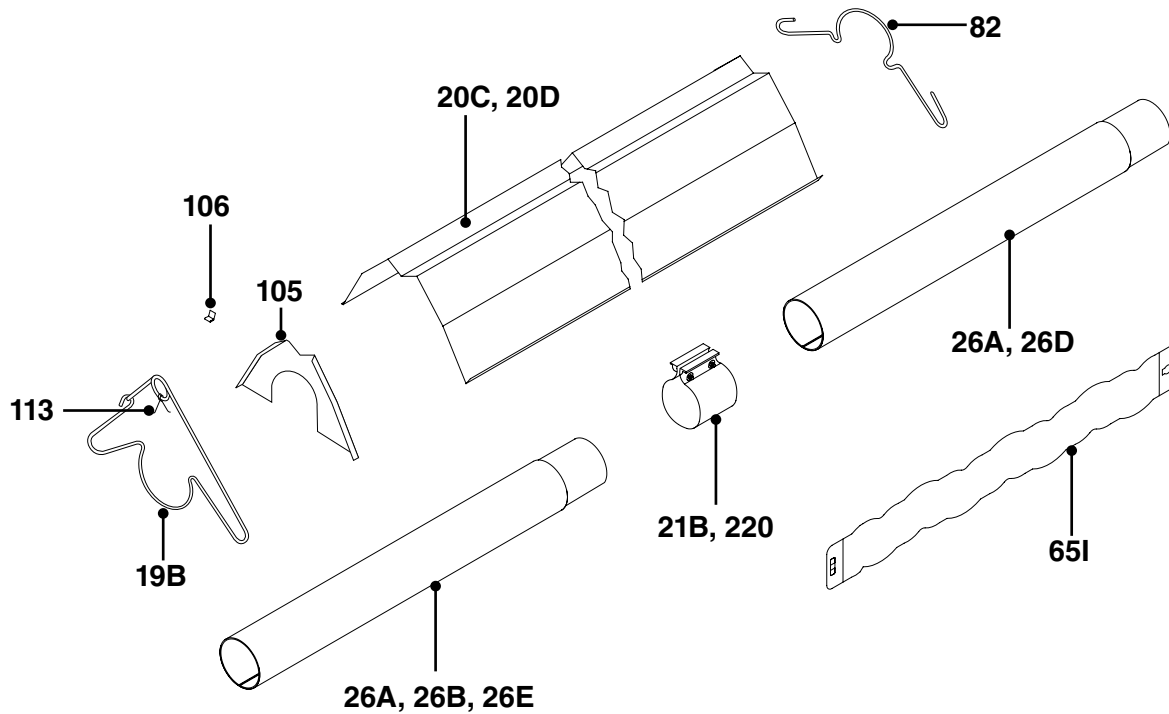


Chart 5.1 • Parts List

Part No.	Description	Part No.	Description
TP-1	Control Box Cover	TP-31B	Control Box Mounting Bracket
TP-5	Flange Gasket	TP-33B	1/2" Shut-Off Ball Valve / Inlet Tap
TP-9	Conduit Coupling	TP-50	Glo-Bar™ Ignitor
TP-10	Conduit 4" x 1/2"	TP-55A	Fan Blower
TP-11	Glo-Bar™ Ignitor Box	TP-65I	36" Interlocking Turbulator Baffle
TP-12	Glo-Bar™ Ignitor Box Cover	TP-66	2" x 4" Outlet Box
TP-13	8 x 1/2" Self-Drilling Screw	TP-67	2" x 4" Outlet Box Cover
TP-14	Sight Glass Gasket	TP-70	Control Box Cover Gasket (per foot**)
TP-15	Sight Glass	TP-76	Rubber Grommet
TP-16	Sight Glass Washer	TP-82	Reflector Center Support (RCS)
TP-17	Sight Glass Kit	TP-83	24" Stainless Steel Flexible Gas Connector
TP-19B	4" Wire Hanger with Tension Spring	TP-84	1/2" Female / Male Flare Fitting
TP-20C	120" Aluminum Reflector	TP-97	1/4" x 1/4" Brass Int./Ext. Atmos. Barb Fitting
TP-20D	120" Stainless Steel Reflector*	TP-105	Aluminum Reflector End Cap
TP-21B	4" Standard Tube Clamp	TP-106	Reflector End Cap Clips (8 pcs.)
TP-26A	10 ft. Coated-ALUM Combustion/Radiant Tube	TP-113	Reflector Tension Spring
TP-26B	10 ft. Coated-AL-TI Combustion Tube	TP-114	Plastic Air Orifice with Screen (consult factory)
TP-26D	10 ft. 304 Stainless Steel Radiant Tube*	TP-200A	Burner (Blue) - consult factory
TP-26E	10 ft. 409 Stainless Steel Combustion Tube*	TP-201B	Burner (Tan) - consult factory

*Stainless steel upgrades available. ** 6 feet total required to cover outer edges of the burner control box.

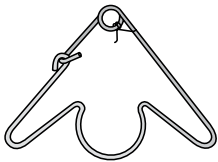

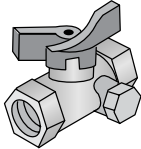

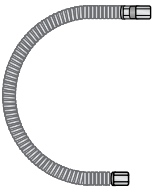
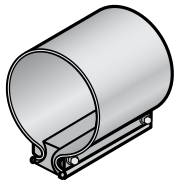
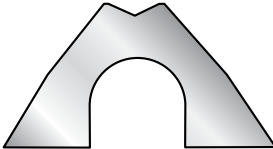
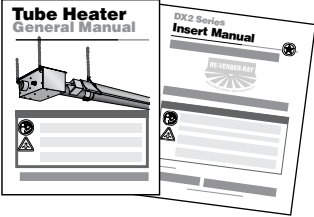
Figure 5.2 • Tube & Reflector Components



Part No.	Description	Part No.	Description
TP-202	16" Burner Tube with Flange (fittings included)	TP-301	Center Divider Panel
TP-204	Gas Orifice (consult factory)	TP-302	End Panel, Left
TP-205	Glo-Bar™ Holder	TP-302A	End Panel, Left with 24VAO Option.
TP-206	Glo-Bar™ Holder Spring Clip	TP-303	End Panel, Right
TP-207	Pressure Switch Mounting Bracket	TP-304	Burner Control Box Outer Shell w/ PC-36
TP-208B	Gas Valve Mounting Bracket	TP-321	Ignition Plate Gasket
TP-212	1/2" x 3" Pipe Nipple	TP-328	120V Amber Operational Indicator Light
TP-214	Glo-Bar™ Wiring Harness	TP-329	1/4" Neutral Terminal Block
TP-217	Pressure Switch Barb	TP-331	Green Self Tap Ground Screw
TP-218	Differential Switch Vinyl Sensing Tube (exhaust)	TP-351A	Potted Circuit Board
TP-219	Differential Vinyl Sensing Tube (burner)	TP-352A	Circuit Board Wiring Harness for TP-351A
TP-220	Stainless Steel Tube Clamp (175 & 200 MBH)*	TP-380	16" Burner Tube with Flange (no fittings)
TP-221	Glo-Bar™ Holder Gasket	TP-383A	Glo-Bar™ Ignitor Plate
TP-222	Flame Rod	TP-804	Burner Control Box Outer Shell
TP-222A	Flame Rod Wire	TP-NOPS	Normally Open Pressure Switch; select below:
TP-223	Gas Manifold	TP-264B	Differential Pressure Switch, 65 to 100 MBH
TP-240	VR4205M-1324 Gas Valve Assembly - Nat. Gas	TP-264E	Differential Pressure Switch, 125 & 150 MBH
TP-241	VR4205M-1357 Gas Valve Assembly - LP Gas	TP-264D	Differential Pressure Switch, 175 MBH
TP-244	Plastic Gas Valve Vent	TP-264F	Differential Pressure Switch, 200 MBH

Kit Contents Check List

Chart 5.2 • Kit Contents for DX2 Series - Reference the length column for your model.

DX2 Series Kit Contents								
TP-19B 4" Hanger with Reflector Tension Spring 	TP-82 4" Reflector Center Support (RCS) 	TP-33B 1/2" Shut-Off Valve (Ball Valve & Inlet Tap) 	TP-106 Reflector End Cap Clips 					
TP-83 24" Stainless Steel Flexible Gas Connector 	TP-21B 4" Tube Clamp 	TP-105 Reflector End Cap 	Tube Heater General Manual and DX2 Series Insert Manual F/N: LIOGTa & LIODX2a 					
Part No.	Description	20 Ft.	30 ft.	40 ft.	50 ft.	60 ft.	70 ft.	80 ft.
TP-19B	4" Hanger w/ Tension Spring	3	4	5	6	7	8	9
TP-21B	4" Tube Clamp	2	3	4*	5*	6*	7*	8*
TP-33B	1/2" Shut-Off Valve w/ Inlet Tap	1	1	1	1	1	1	1
TP-82	4" Reflector Center Support	2	3	4	5	6	7	8
TP-83	24" S.S. Flexible Gas Connector	1	1	1	1	1	1	1
TP-105	Reflector End Cap	2	2	2	2	2	2	2
TP-106	Reflector End Cap Clips	8	8	8	8	8	8	8
LIOGTa	General Tube Heater Manual	1	1	1	1	1	1	1
LIODX2a	DX2 Series Insert Manual	1	1	1	1	1	1	1
Additional kit contents as supplied when heater is configured with Add-On Options (if applicable)								
TP-25	1/4" Female Spade Terminal (24VAO)	2	2	2	2	2	2	2
Filled By:								

***NOTE:** One 4" stainless steel tube clamp (P/N: TP-220) is provided for each 175,000 - 200,000 BTU model. Place as shown on page 11.

Approvals

- CSA.
- Indoor approval.
- Outdoor approval with OD-Kit.
- Commercial approval.

Limited Warranty

- 1 year - Burner box components.
- 5 years - Combustion and radiant tubes.
- 10 years - Stainless steel burner.
- See page 36 of the General Tube Heater Manual for terms and conditions.



© 2014 Detroit Radiant Products Co.
 21400 Hoover Road • Warren, MI 48089
 Phone: 586-756-0950 Fax: 586-756-2626
www.detroitradiant.com • sales@drp-co.com